



**ANOTHER GOOD CALL**



## **NEW PRODUCTS**

**Pink® Batts® Skillion Roof**  
**Pink® Batts® Steel Framed Wall**  
**High Wind Zone Solutions**



Lake Manapouri

[www.pinkbatts.co.nz](http://www.pinkbatts.co.nz)





## High Performance insulation designed for New Zealand

The new Pink® Batts® Skillion Roof, Steel Framed Wall, 140mm wall and Narrow Wall Insulation products are designed for specific roof and wall cavities to help ensure performance in the New Zealand environment. All products are available in a range of high performance R-values to help meet New Zealand building code requirements.



COMFORT



COST SAVINGS



SUSTAINABILITY



PRODUCT SAFETY



HEALTHY LIVING



ASSURANCE

# Pink® Batts® Skillion Roof Insulation

## Application:

**Restricted ventilation in skillion roof constructions can result in moisture build up. Pink® Batts® Skillion Roof Insulation is specifically designed to increase ventilation clearances while still maintaining a high R-value in:**

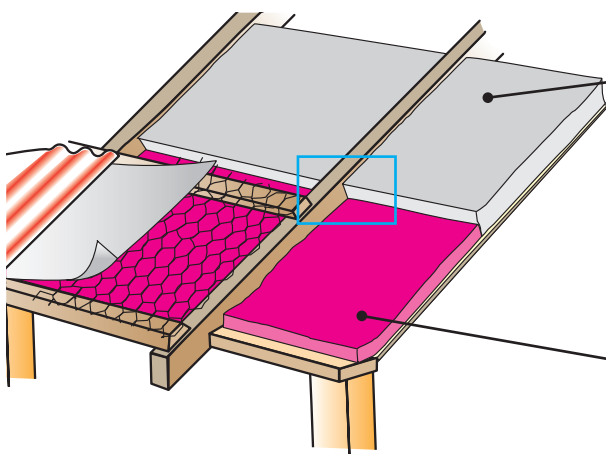
- New buildings and retrofits of existing ceilings
- Modern 'lean to' style extensions on existing homes
- Low profile roof design and restricted roof cavities

Cathedral style roofs and raked ceilings are generally skillion roof constructions where the ceiling and roof line are the same.

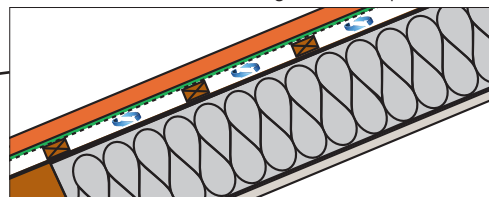
## Why select Pink® Batts® Skillion Roof Insulation?

Standard insulation is often too thick for skillion roof cavities, resulting in restricted ventilation and compressed insulation that reduces the R-value performance. To ensure durability and performance Pink® Batts® Skillion Roof Insulation provides:

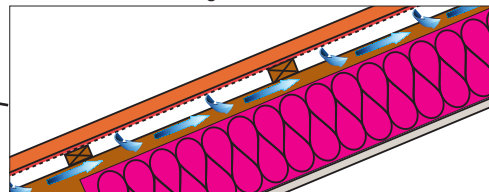
- **Extra Ventilation** - Unlike standard 140mm roof products, Pink® Batts® R3.2 Skillion Roof Insulation allows for a 25mm ventilation clearance. This extra ventilation helps reduce the moisture related problems associated with skillion roofs.



Restricted airflow using 140mm product



Free airflow using Pink® Batts® Skillion Roof Insulation



- **H1 compliant R-value range** - Available in R3.2 and R3.6, for 140mm and 190mm rafter constructions respectively, meeting typical NZBC H1: Energy Efficiency requirements
- **Assurance of a BRANZ appraisal** - 50 year durability as required by the NZBC for performance in skillion roof applications

## Design considerations and selection:

To ensure performance and durability, internal moisture, condensation and ventilation must be carefully considered during roof design to prevent moisture build up and associated issues.

Use the rafter/purlin depth to work out the most appropriate product for your construction.

Rafter Depth (mm)	Product	Product Code	Nominal Stabilised Thickness (mm)
140	Pink® Batts® Skillion Roof R3.2	7110232	115
190	Pink® Batts® Skillion Roof R3.6	7110236	165

For typical constructions both these products will meet New Zealand Building Code Clause H1 under the schedule method. However, please check your construction R-value using the BRANZ House insulation guide to ensure compliance.

For more detailed information please refer to the Pink® Batts® Skillion Roof Insulation datasheet available on [www.pinkbatts.co.nz](http://www.pinkbatts.co.nz)

## Pink® Batts® Steel Framed Wall Insulation

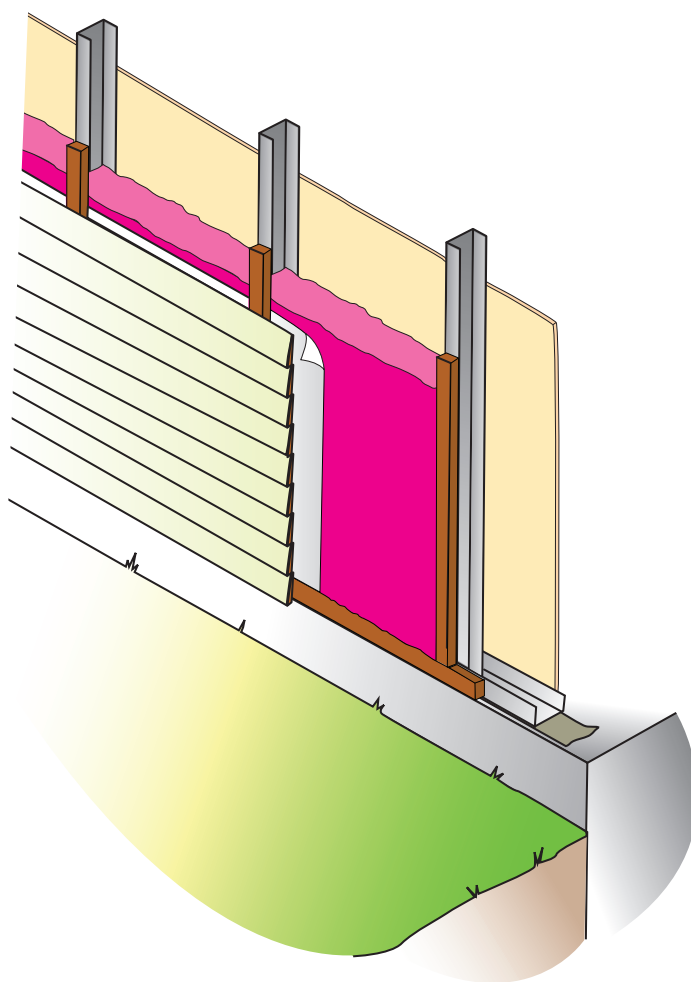
### Application:

Pink® Batts® Steel Framed Wall Insulation is specifically designed for insulating steel framed houses. The pieces are wider and longer than standard segments to slot neatly into steel framing sections.

### Why select Pink® Batts® Steel Framed Wall Insulation?

Pink® Batts® Steel Frame Wall Insulation makes compliance simple, as the insulation is:

- **Easy to install** – Larger pieces ensure fast and neat installation, reducing cutting, wastage and likelihood of gaps compared to standard wall insulation
- **Available in a range of R-values** – R2.2 to suit the North Island (ex Central Plateau) and R2.6 in the South Island and Central Plateau



### Selection Table

R-Value	Product	Product Code	Nominal Stabilised Thickness (mm)	Piece Size (mm)
R2.2	Pink® Batts® Steel R2.2 Wall	7160214	90	1220 x 610
R2.6	Pink® Batts® Steel R2.6 Wall	7160215	90	1220 x 610

For further information please refer to the Pink® Batts® Steel Framed Wall Insulation datasheet available on [www.pinkbatts.co.nz](http://www.pinkbatts.co.nz)

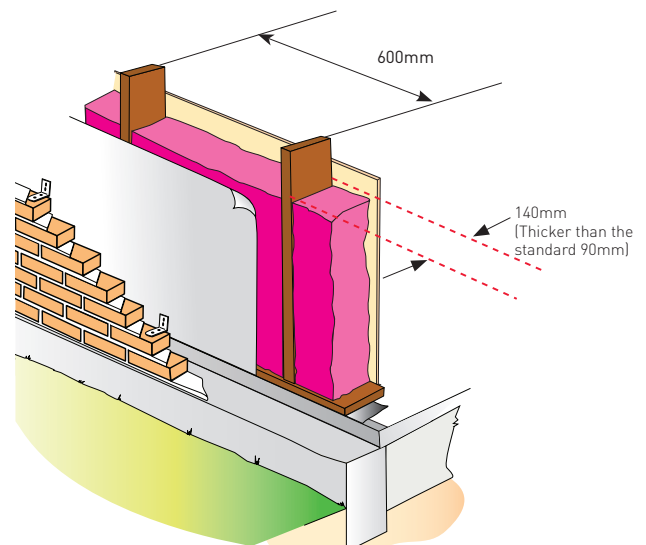
## High Wind Zone Wall Insulation Solutions

In higher wind zone areas, stronger wall constructions are often required to cope with their more demanding conditions. This can be achieved by either building a wall with standard 90mm framing and spacing studs closer together at 400mm centres, or using 140mm framing and retaining 600mm stud centres. (For comprehensive details refer to NZS3604:2011)

**No matter which option best suits your needs, Pink® Batts® Insulation has a range of easy to install solutions.**

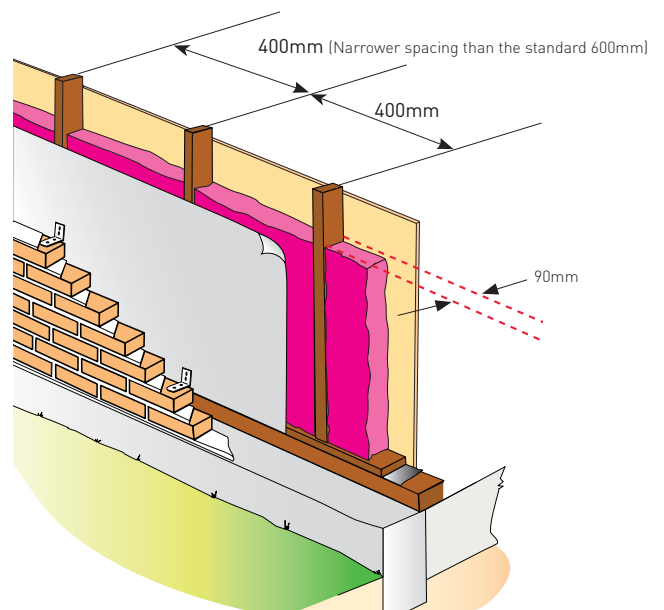
### Recommended: Pink® Batts® 140mm Wall Insulation

To get optimum thermal performance we recommend using 140mm wall framing. The spacing and thickness of the framing reduces the effects of thermal bridging (heat loss through the timber).



### New Pink® Batts® Narrow Wall Insulation

While the existing Pink® Batts® wall range can be cut down to fit into studs spaced at 400mm centres, it requires extra handling and leads to wastage. The new Pink® Batts® Narrow Wall Insulation avoids this need and ensures a faster and tidier installation.





## Product Information

### Recommended: Pink® Batts® 140mm Wall Insulation

#### Application:

Standard wall insulation products are designed for 90mm wall framing. The Pink® Batts® 140mm Wall Range is specifically designed to offer a choice of high performance R-values to thermally insulate:

- New buildings with 140mm wall framing
- Extensions and renovations with 140mm wall framing

#### Why select Pink® Batts® 140mm Wall Insulation?

Unlike many other 140mm insulation products, Pink® Batts® 140mm Wall Insulation is specifically designed for wall applications with the following benefits:

- **Easy to install** - reduces double handling of a 90mm + 50mm Masonry
- **High performance R-value range** - available in a range of R-values up to R4.0 to achieve higher levels of energy efficiency
- **Superior durability** - manufactured with our unique Pink® Batts® wall formulation to ensure the product does not sag or deteriorate over time. The BRANZ Appraisal provides independent assurance of the 50 year durability requirement of the New Zealand Building Code

### New Pink® Batts® Narrow Wall Insulation

#### Application:

Pink® Batts® Narrow Wall Insulation is specifically designed for insulating walls with closer stud centres. The pieces are narrower than standard segments to fit neatly into reduced wall cavities.

#### Why select Pink® Batts® Narrow Wall Insulation?

Pink® Batts® Narrow Wall Insulation makes compliance simple, as the insulation is:

- **Easy to install** - Narrower pieces ensure fast and tidy installation, and reduce cutting, wastage and the likelihood of gaps compared to standard wall insulation
- **Available in a range of R-values** - R2.2 to suit the North Island (ex Central Plateau) and R2.6 in the South Island and Central Plateau

Selection Table	Wall Cavity (mm)	R-value	Product	Product Code	Piece Size (mm) length x width x nominal thickness
Recommended	140	R3.2	Pink® Batts® R3.2 140mm Wall	7120132	1140 x 580 x <b>140</b>
		R3.6	Pink® Batts® R3.6 140mm Wall	7120136	1140 x 580 x <b>140</b>
		R4.0	Pink® Batts® R4.0 140mm Wall	7120140	1140 x 580 x <b>140</b>
Existing	90	R1.8 – 2.4	Pink® Batts® Classic Wall Range	7120118 7120122 7120124	1140 x 580 x 90
R2.6 – 2.8		Pink® Batts® Ultra® Wall Range	7120126 7120128	1140 x 580 x 90	
Narrow		R2.2	Pink® Batts® Narrow R2.2 Wall	7120123	1140 x <b>380</b> x 90
		R2.6	Pink® Batts® Narrow R2.6 Wall	7160207	1140 x <b>380</b> x 90





For further information please refer to the Pink® Batts® Wall Insulation datasheet available on [www.pinkbatts.co.nz](http://www.pinkbatts.co.nz)

## New Zealand Made makes a good eco-option

Pink® Batts® insulation has been produced in New Zealand since 1961 and we currently manufacture in both Auckland and Christchurch plants. So, unlike products imported from overseas, we do not create additional environmental impact from shipping. This also means our manufacturing draws from New Zealand's electricity supply, about two-thirds of which is generated from renewable sources: more than most of our competitor countries.

### Our commitment to safe and sustainable products

We have also ensured that our product meets many of the highest independently assessed industry standards for health, safety and environmental sustainability.

 <p>Licence No 2504017. Thermal Building Insulants</p>	<h4>Environmental Choice</h4> <p>Independently assessed on:</p> <ul style="list-style-type: none"> <li>• Waste minimisation: Recycled content, and recycling of process waste</li> <li>• Energy management: Effective energy management policies and procedures</li> <li>• Manufacturing process: Not manufactured using blowing agents with a global warming potential (GWP) or ozone-depleting potential (ODP)</li> <li>• Product characteristics: Durability and performance</li> <li>• While only the higher R-value products are eligible for Environmental Choice, all Pink® Batts® Thermal Insulation Products are manufactured in the same environmentally considerate way. For more information refer to the relevant product datasheet.</li> </ul>
	<h4>Bio-soluble</h4> <p>The glass wool used to manufacture Pink® Batts® insulation is a safe bio-soluble formulation that is not the same as fibreglass or asbestos. In the event any glass wool fibres are inhaled into the lungs they will dissolve in the body fluids and be rapidly cleared from the body. The glass wool is classified under the same category as caffeine, tea and chlorinated drinking water.</p>
	<h4>Indoor Air Quality</h4> <p>The independent M1 and GREENGUARD Indoor Air Quality standard set stringent achievement criteria for indoor air quality, including volatile organic compounds and formaldehyde. Pink® Batts® insulation has achieved the necessary targets to attain both standards.</p>
	<h4>New Zealand Asthma Foundation's Sensitive Choice Programme</h4> <p>Safe to install in the homes of those suffering from asthma, as well as offering other health benefits.</p>

# Thermal & Acoustic Insulation

# PRODUCT GUIDE

	BRANZ APPRAISED	ENVIRONMENTAL CHOICE	GREENGUARD	PRODUCT CODE	SIZE (mm)	NOMINAL STABILISED THICKNESS (mm)	NOMINAL TOTAL AREA PER BALE (m <sup>2</sup> )	APPROX. COVERAGE PER BALE* (m <sup>2</sup> )
--	--------------------	-------------------------	------------	-----------------	--------------	--	--	---

## ROOF - Thermal

Pink® Batts® Classic R1.8 Ceiling	✓		✓	7110118	1220 x 432	95	13.7	14.4
Pink® Batts® Classic R2.2 Ceiling	✓		✓	7110122	1220 x 432	115	12.6	13.3
Pink® Batts® Classic R2.6 Ceiling	✓		✓	7110126	1220 x 432	140	10.5	11.1
Pink® Batts® Classic R3.2 Ceiling	✓		✓	7110132	1220 x 432	170	8.4	8.8
Pink® Batts® Classic R3.6 Ceiling	✓	✓	✓	7110136	1220 x 432	180	7.4	7.7
Pink® Batts® Ultra® R4.0 Ceiling	✓	✓	✓	7110140	1220 x 432	195	6.3	6.6
Pink® Batts® Ultra® R4.6 Ceiling	✓	✓	✓	7110146	1220 x 432	205	5.3	5.5
Pink® Batts® Ultra® R5.0 Ceiling	✓	✓	✓	7110150	1220 x 432	210	4.2	4.4
Pink® Batts® Skillion Roof R3.2 <b>NEW</b>	✓		✓	7110232	1220 x 432	115	3.7	3.9
Pink® Batts® Skillion Roof R3.6 <b>NEW</b>	✓	✓	✓	7110236	1220 x 432	165	6.3	6.6

## WALL - Thermal

Pink® Batts® Classic R1.8 Wall	✓		✓	7120118	1140 x 580	90	17.2	19.6
Pink® Batts® Classic R2.2 Wall	✓		✓	7120122	1140 x 580	90	13.9	15.8
Pink® Batts® Classic R2.4 Wall	✓		✓	7120124	1140 x 580	90	10.6	12.1
Pink® Batts® Ultra® R2.6 Wall	✓	✓	✓	7120126	1140 x 580	90	9.92	11.3
Pink® Batts® Ultra® R2.8 Wall	✓	✓	✓	7120128	1140 x 580	90	6.61	7.5
Pink® Batts® R1.0 Masonry Wall	✓		✓	7160110	1220 x 580	40	21.2	-
Pink® Batts® R1.2 Masonry Wall			✓	7160134	1220 x 580	50	16.98	-
Pink® Batts® R3.2 140mm Wall <b>NEW</b>	✓	✓	✓	7120132	1140 x 580	140	9.9	11.3
Pink® Batts® R3.6 140mm Wall <b>NEW</b>	✓	✓	✓	7120136	1140 x 580	140	7.3	8.3
Pink® Batts® R4.0 140mm Wall <b>NEW</b>	✓	✓	✓	7120140	1140 x 580	140	5.3	6.0
Pink® Batts® Steel R2.2 Wall <b>NEW</b>			✓	7160214	1220 x 610	90	15.63	15.6
Pink® Batts® Steel R2.6 Wall <b>NEW</b>			✓	7160215	1220 x 610	90	9.67	9.7
Pink® Batts® R2.2 Narrow Wall <b>NEW</b>			✓	7120123	1140 x 380	90	9.53	11.25
Pink® Batts® R2.6 Narrow Wall <b>NEW</b>			✓	7160207	1140 x 380	90	7.8	9.2

## WALL - Acoustic

Pink® Batts® Silencer® 100mm			✓	7310001	1140 x 580	100	13.2	14.9
Pink® Batts® Silencer® 75mm			✓	7310003	1140 x 580	75	17.2	19.5

## FLOOR - Thermal

Pink® Batts® Classic R1.6 SnugFloor® Narrow	✓	✓	✓	7134816	1220 x 480	70	9.4	8.8
Pink® Batts® Classic R1.6 SnugFloor® Wide	✓	✓	✓	7135816	1220 x 580	70	11.3	11.3
Pink® Batts® Ultra® R2.6 SnugFloor® Narrow	✓	✓	✓	7131451	1220 x 480	110	8.8	8.2
Pink® Batts® Ultra® R2.6 SnugFloor® Wide	✓	✓	✓	7131601	1220 x 580	110	10.6	10.6

## FLOOR - Acoustic

Pink® Batts® Silencer® Midfloor			✓	7310051	1140 x 432	150	4.93	5.2
---------------------------------	--	--	---	---------	------------	-----	------	-----

## ACCESSORIES

Pink® Batts® R1.3 Hot Water Cylinder Wrap 4.5m			✓	7140000	4500 x 1200	60	5.4	-
Pink® Batts® R1.3 Hot Water Cylinder Wrap 3.0m			✓	7140002	3000 x 1200	60	3.6	-

\* Coverage relates to standard structures and actual coverage may vary.



\* Please refer to [www.pinkbatts.co.nz](http://www.pinkbatts.co.nz) for specific product appraisals and accreditation details.

This document supersedes all previous versions and may have been superseded; is a guide only and the purchaser should ascertain the suitability of this product for the end-use situation intended and when used in conjunction with other products; and is provided without prejudice to Tasman Insulation New Zealand Ltd (Tasman) standard terms of sale. Tasman retains the right to change specification without prior notice. Refer to [www.pinkbatts.co.nz](http://www.pinkbatts.co.nz) or consult Tasman for further information. Do not use this product for any application not detailed in this document or otherwise in relation to the product is limited to the fullest extent permitted by law. Except where the consumer acquires the goods for the purposes of a business, any rights a consumer may have under the Consumer Guarantees Act are not affected. The colour PINK and Pink® are registered trade marks of Owens Corning used under license by Tasman Insulation. Batts® is the registered trade mark of Tasman Insulation.

Feb 2013 RevH 3015